



STONE PUNCH SERIES

CREATION OF EMMAR
INTERNATIONAL CO.,LTD

Specification



Suitable for contact
with foodstuffs



Resistant to chemicals,
acids, alkalis and solvents



Resistant to
humidity



Resistant to mould
and fungi



Resistant to
staining



Resistant to UV rays,
no alteration to colours



Suitable for indoor and
outdoor applications



Resistant to
thermal shock



Resistant to
deflection



Resistant to heat and
high temperatures



Resistant to
freeze-thaw



Resistant to scratches
and abrasions

OUR PORCELAIN TILES THAT CAN HANDLE EVERTHING!

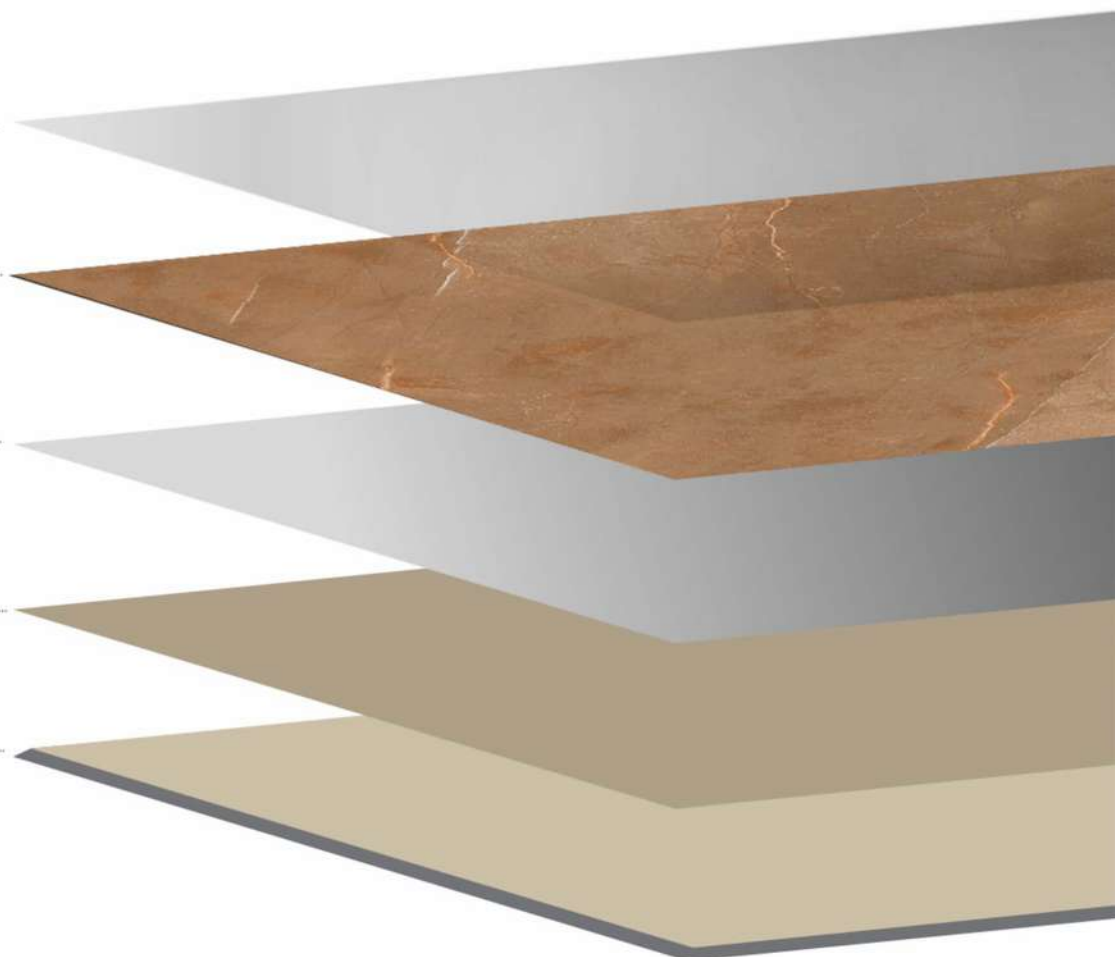
HIGH ABRASION RESISTANT •
GLAZE LAYER

DESIGN PRINT •

GLAZE LAYER •

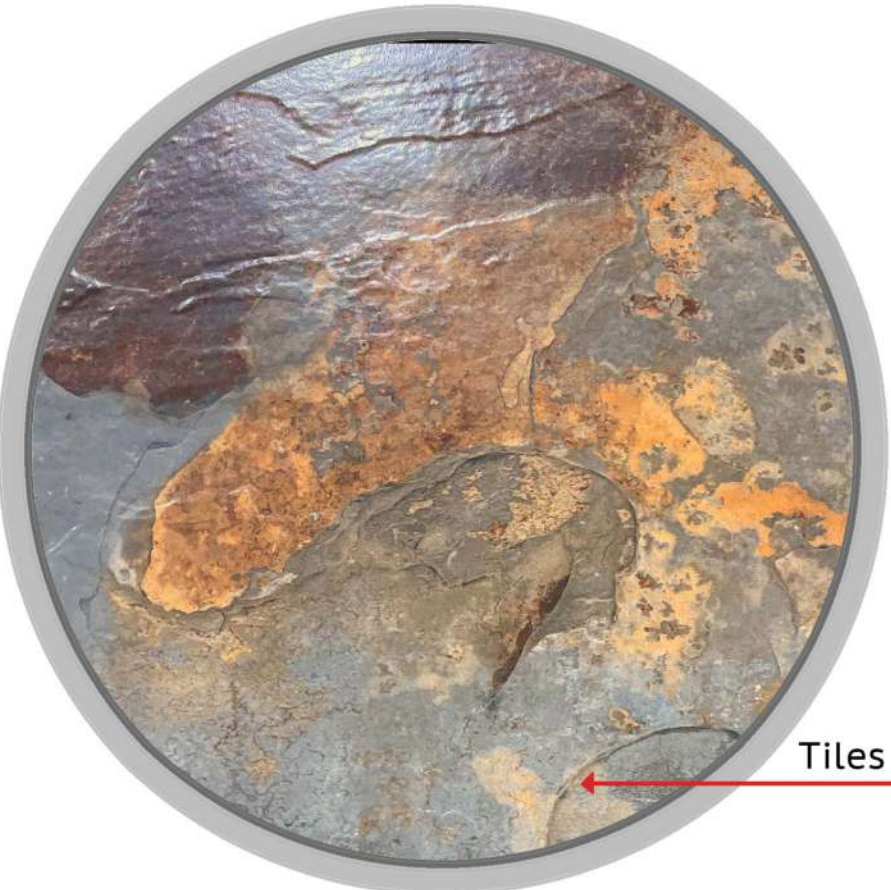
ENGOBE LAYER •

TILE BODY •

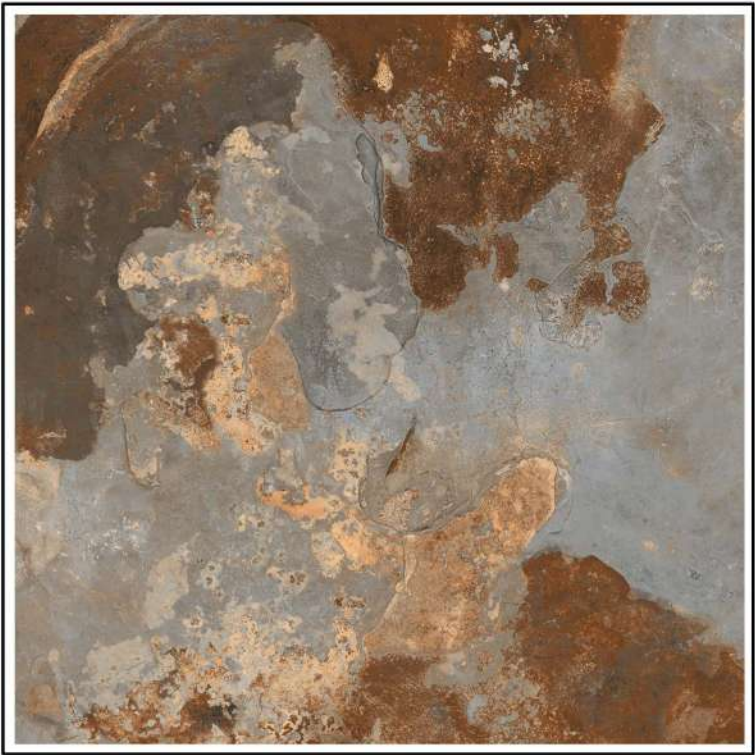


STONE PUNCH SERIES

600x600mm

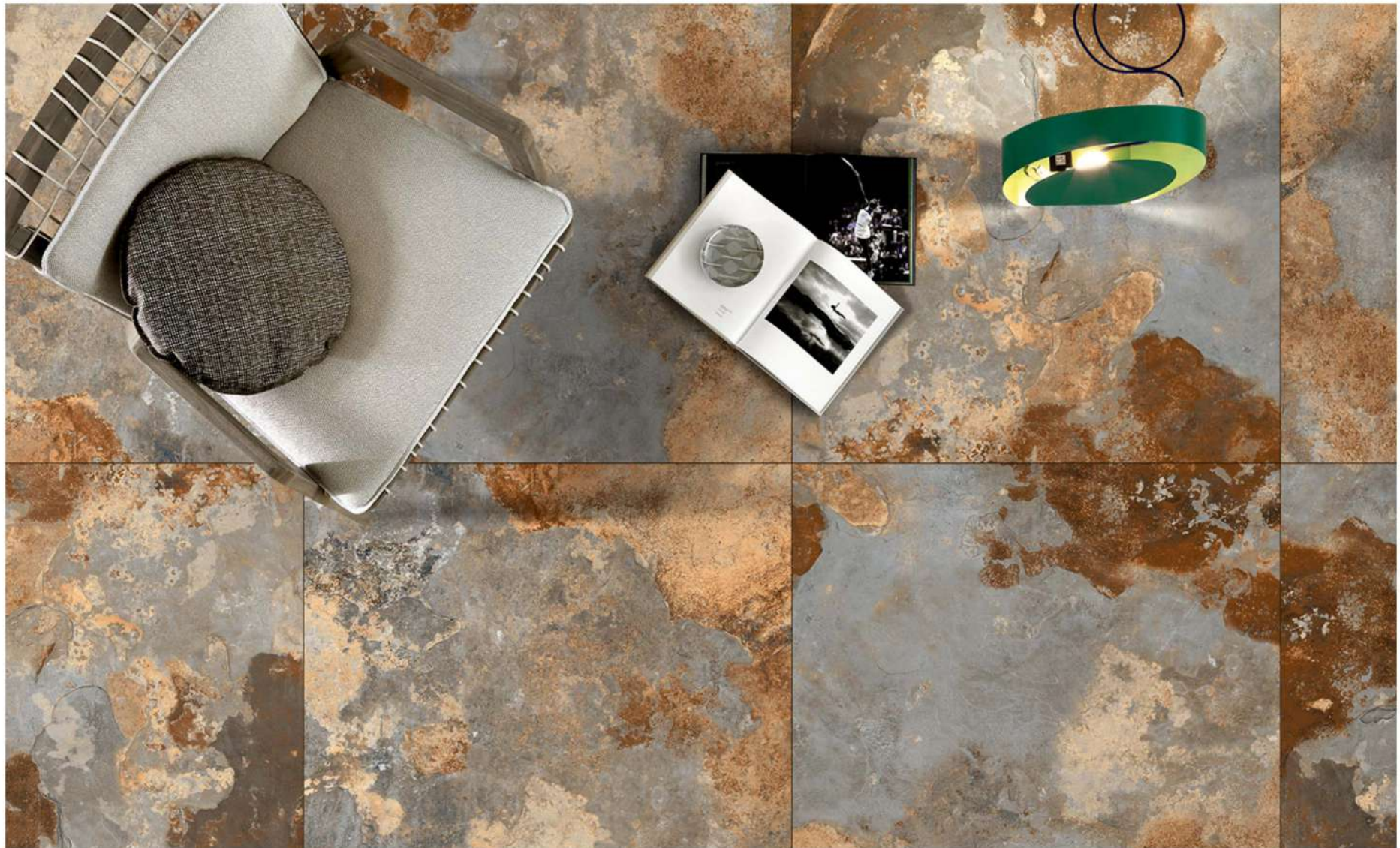


Tiles Effect



CALYPSO BLAZE

 High Durability	 Easy Installation	 Anti Slip Surface	 Easy Maintenance	 Hygienic Surface	 Fire & Water Resistance
--	---	---	--	--	---

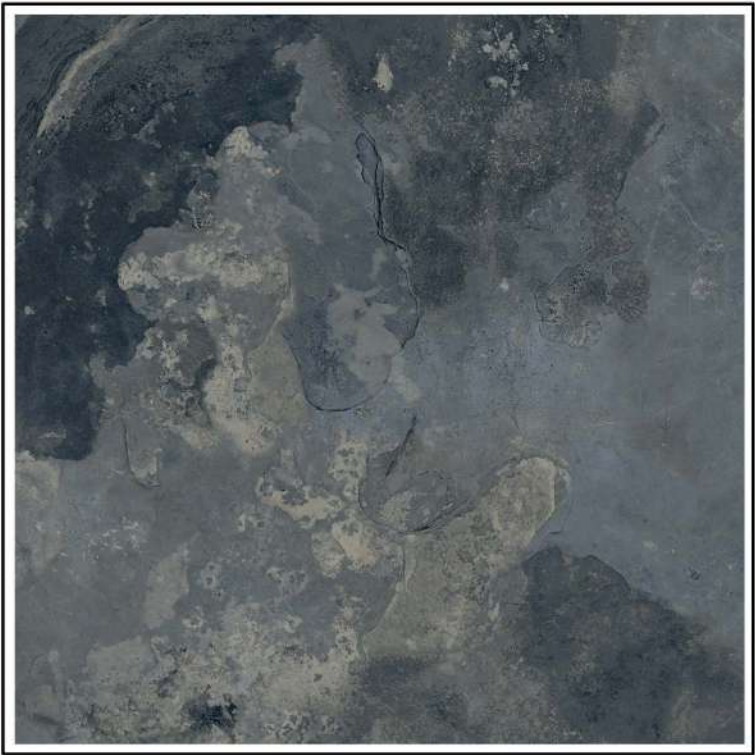


STONE PUNCH SERIES

600x600mm



Tiles Effect



CALYPSO MINE

 High Durability	 Easy Installation	 Anti Slip Surface	 Easy Maintenance	 Hygienic Surface	 Fire & Water Resistance
--	---	---	--	--	---



STONE PUNCH SERIES

600x600mm



Tiles Effect



CALYPSO GOLD

 High Durability	 Easy Installation	 Anti Slip Surface	 Easy Maintenance	 Hygienic Surface	 Fire & Water Resistance
--	---	---	--	--	---



STONE PUNCH SERIES

600x600mm



Tiles Effect



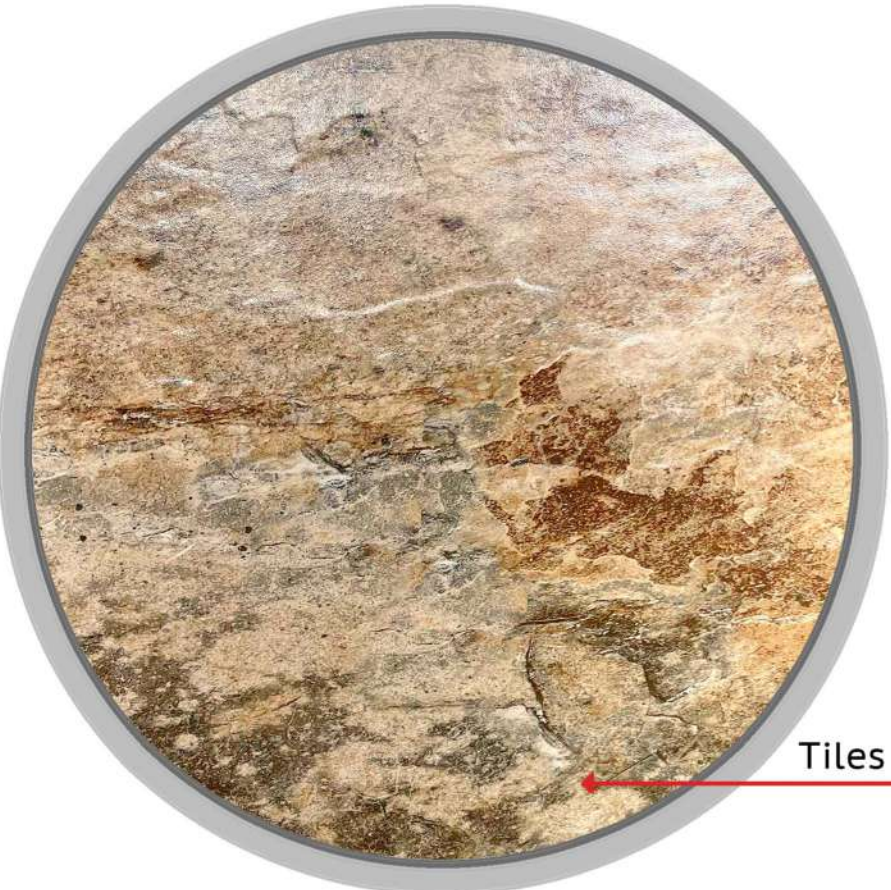
CALYPSO CREMA

 High Durability	 Easy Installation	 Anti Slip Surface	 Easy Maintenance	 Hygienic Surface	 Fire & Water Resistance
--	---	---	--	--	---



STONE PUNCH SERIES

600x600mm



Tiles Effect



CALYPSO REO

- High Durability
- Easy Installation
- Anti Slip Surface
- Easy Maintenance
- Hygienic Surface
- Fire & Water Resistance



STONE PUNCH SERIES

600x600mm

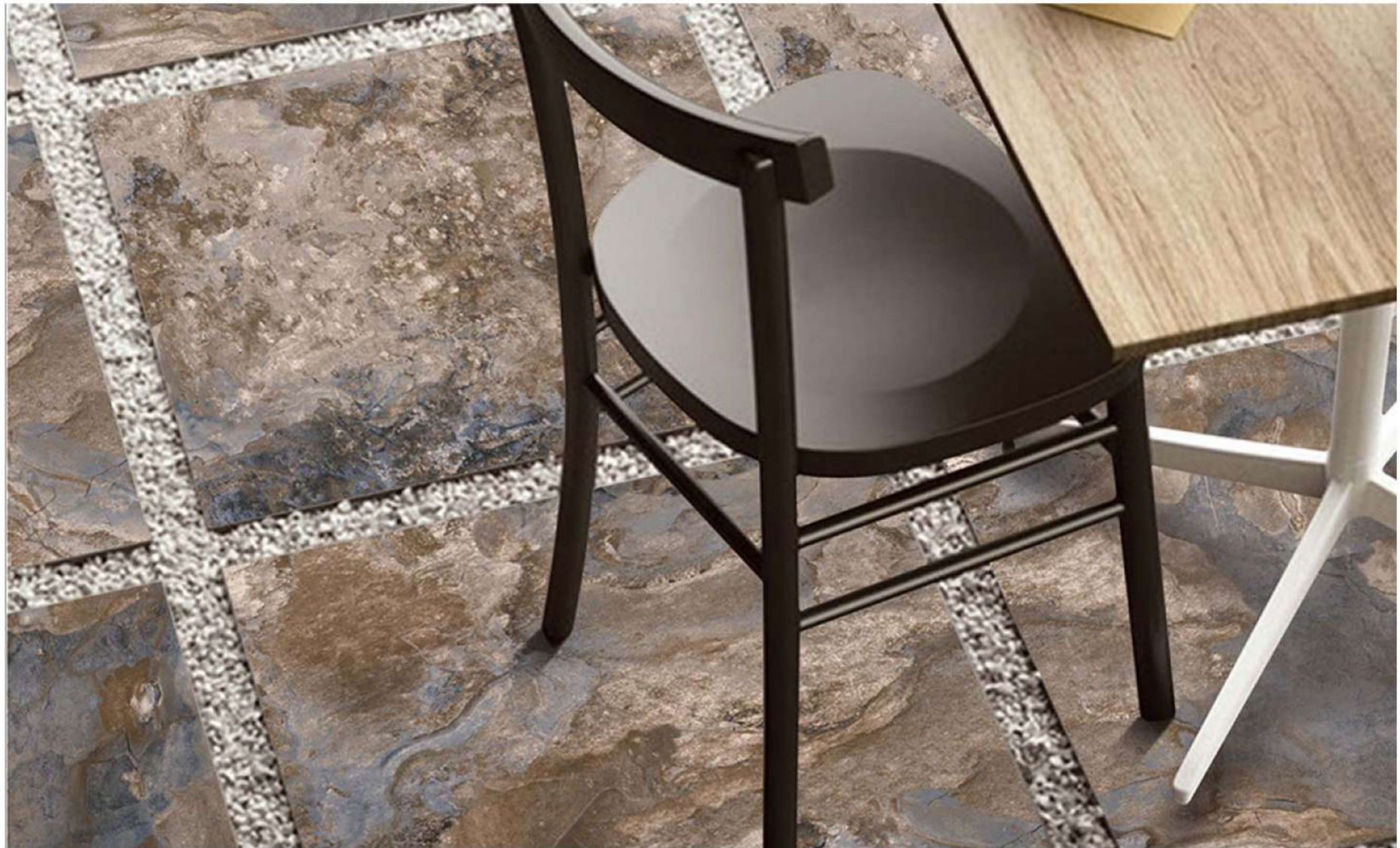


Tiles Effect



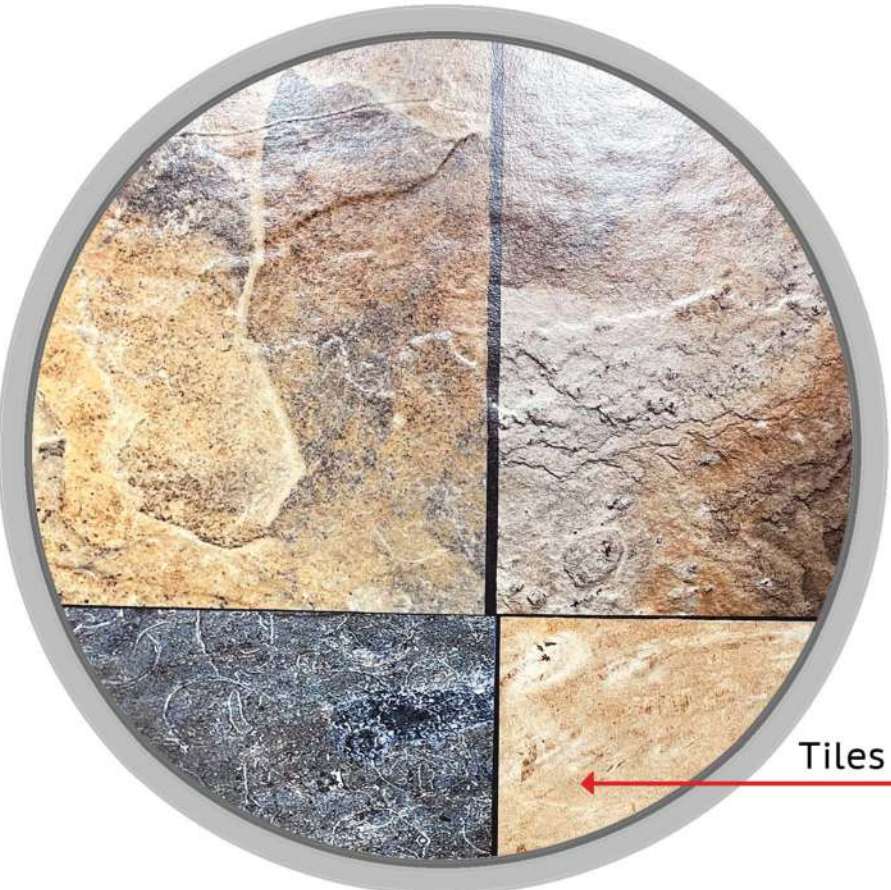
MOUNTAIN BLUE

 High Durability	 Easy Installation	 Anti Slip Surface	 Easy Maintenance	 Hygienic Surface	 Fire & Water Resistance
--	---	---	--	--	---



STONE PUNCH SERIES

600x600mm



Tiles Effect



MULTI STONE

 High Durability

 Easy Installation

 Anti Slip Surface

 Easy Maintenance

 Hygienic Surface

 Fire & Water Resistance

